

# Specifications

## 28Z-Meter Concrete Pump

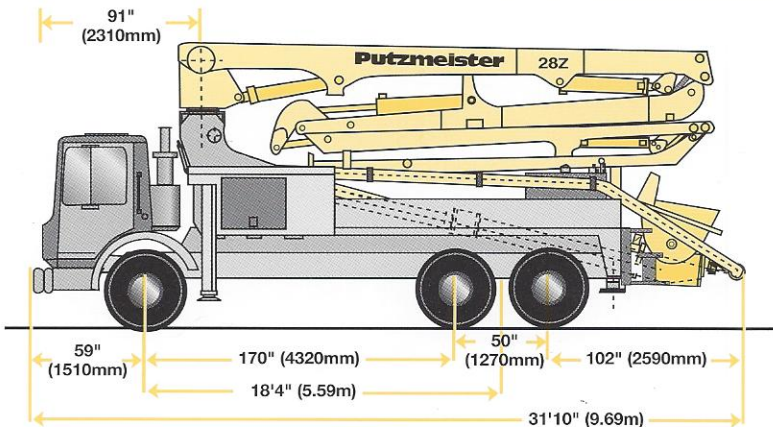
### Truck-Mounted Specifications

Based on Model Mack MR 688S  
with .12L pump cell

Length	31' 10"	(9.69m)
Width	8' 2"	(2.50m)
Height	12' 11"	(3.93m)
Wheelbase	195"	(4950mm)
Front axle weight	16,100 lbs	(7,303kg)
Rear axle weight	29,500 lbs	(13,381kg)
Approx total weight	45,600 lbs	(20,684kg)

Weights are approximate and include pump, boom, truck, full hydraulic oil, driver and some fuel. Varies with options selected.

Dimensions will vary with different truck makes, models and specifications.



### Boom Specifications • Multi-Z Design

#### Height & Reach

Vertical reach	90'5"	(27.55m)
Horizontal reach	78'3"	(23.85m)
Reach from front of truck*	70'9"	(21.56m)
Reach depth	53'6"	(16.30m)
Unfolding height	21'4"	(6.5m)

#### 4-Section Boom

1st section articulation	103°	
2nd section articulation	180°	
3rd section articulation	265°	
4th section articulation	263°	
1st section length	22'10"	(6.96m)
2nd section length	18'6"	(5.64m)
3rd section length	18'5"	(5.61m)
4th section length	18'6"	(5.64m)

#### General Specs

Pipeline size (ID) metric ends	5"	(125mm)
with couplings	5.5"	(140mm)
Rotation	365°	
End hose-length (heavy duty)	10'	(3m)
End hose-diameter	5"	(125mm)
Outrigger spread L-R-front	20'9"	(6.32m)
telescopic diagonal		
Outrigger spread L-R-rear	8'5"	(2.57m)
down only		

### Pump Specifications

#### 28Z.12L

#### 28Z.16H

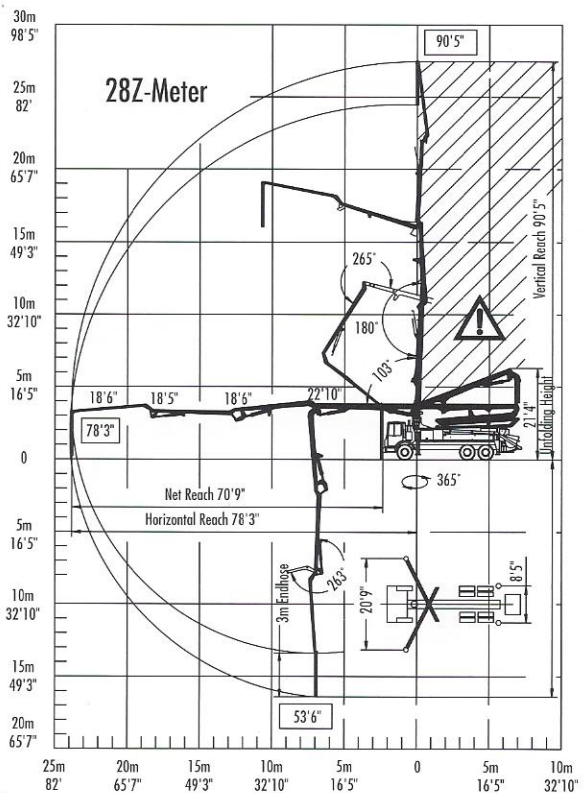
	rod side	142 yd <sup>3</sup> /hr (109m <sup>3</sup> /hr)	210 yd <sup>3</sup> /hr (160m <sup>3</sup> /hr)	
Output-	piston side	85 yd <sup>3</sup> /hr (65m <sup>3</sup> /hr)	146 yd <sup>3</sup> /hr (112m <sup>3</sup> /hr)	
Pressure-	rod side	1015 psi (70 bar)	1233 psi (85 bar)	
	piston side	1624 psi* (112 bar)*	1885 psi* (130 bar)*	
Concrete cylinder diameter	9"	(230mm)	9"	(230mm)
Stroke length	83"	(2100mm)	83"	(2100mm)
Max strokes per minute-	rod side	21	31	
	piston side	13	21	
Volume control	0-Full		0-Full	
Vibrator	Standard		Standard	
Hard chromed concrete cylinders	Standard		Standard	
Hydraulic system	Free Flow		Free Flow	
Hydraulic system pressure	5075 psi (350 bar)		5075 psi (350 bar)	
Differential cylinder diameter	5.1" (130mm)		5.5" (140mm)	
Rod diameter	3.1" (80mm)		3.1" (80mm)	
Maximum size aggregate	2.5" (63mm)		2.5" (63mm)	
Water tank	185 gal (700L)		185 gal (700L)	

Maximum theoretical values listed.

\* Applies to units mounted on PMA stock truck-MACK MR 688S

• Standard delivery line system rated at max line pressure of 1233 psi (85 bar)

Right to make technical amendments reserved.



End hose not to be operated in caution area.



**Putzmeister America**  
1733 90th Street  
Sturtevant  
Wisconsin 53177 USA

Telephone (262) 886-3200  
(800) 884-7210  
Facsimile (262) 884-6338  
www.putzmeister.com