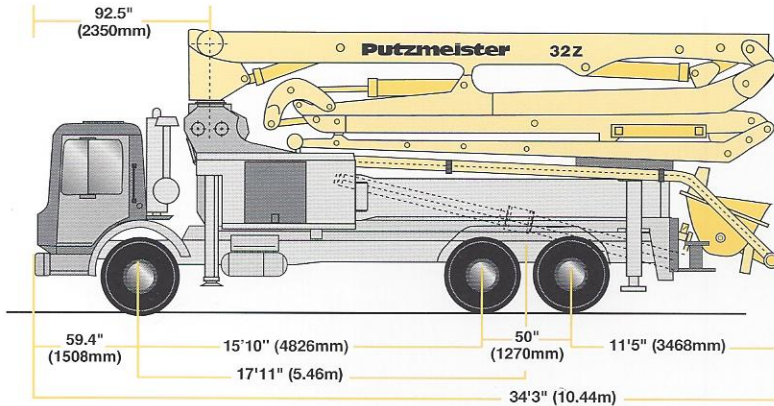


# Specifications

## 32Z-Meter Concrete Pump



### Truck-Mounted Specifications

Based on Model Mack MR688S with .16H pump cell.

Length	34'3"	(10.44m)
Width	8' 2"	(2.50m)
Height	13'0"	(3.96m)
Wheelbase	215"	(5461mm)
Front axle weight	19,750 lbs	(8,958kg)
Rear axle weight	33,750 lbs	(15,309kg)
Approx total weight	53,500 lbs	(24,267kg)

Weights are approximate and include pump, boom, truck, full hydraulic oil, driver and some fuel. Varies with options selected.

Dimensions will vary with different truck makes, models and specifications.

### Boom Specifications • Multi-Z Design

#### Height & Reach

Vertical reach	104'6"	(31.85m)
Horizontal reach	91'10"	(28.00m)
Reach from front of truck*	83'4"	(25.40m)
Reach depth	68'3"	(20.80m)
Unfolding height	25'3"	(7.70m)

#### 4-Section Boom

1st section articulation	99°
2nd section articulation	180°
3rd section articulation	266°
4th section articulation	268°
1st section length	26' (7.92m)
2nd section length	22' (6.71m)
3rd section length	22' (6.71m)
4th section length	22' (6.71m)

#### General Specs

Pipeline size (ID) metric ends	5"	(125mm)
with couplings	5.5"	(140mm)
Rotation	365°	
End hose-length (heavy duty)	10'	(3m)
End hose-diameter	5"	(125mm)
Outrigger spread L-R-front telescopic diagonal	18'	(5.50m)
Outrigger spread L-R-rear swing-out	18'	(5.50m)

### Pump Specifications

**32Z.12L      32Z.16H**

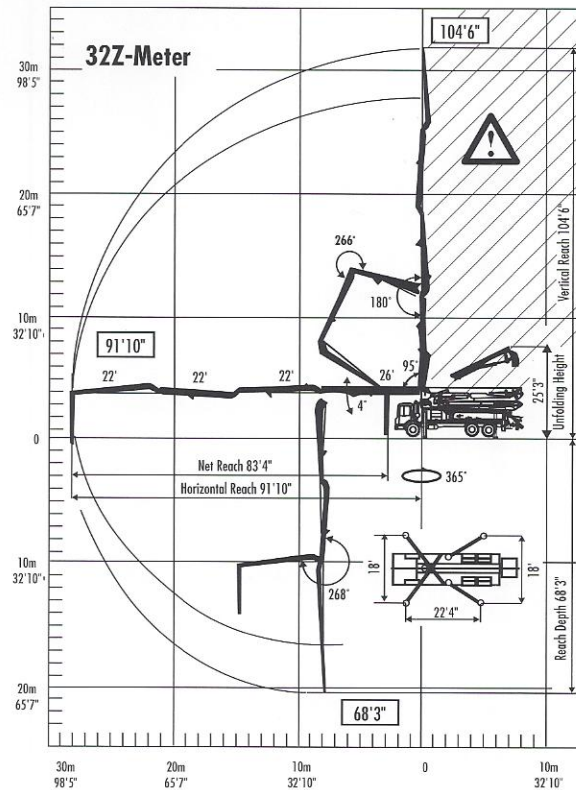
.20H pump also available

	rod side	142 yd <sup>3</sup> /hr (109m <sup>3</sup> /hr)	210 yd <sup>3</sup> /hr (160m <sup>3</sup> /hr)	
Output-	piston side	85 yd <sup>3</sup> /hr (65m <sup>3</sup> /hr)	146 yd <sup>3</sup> /hr (112m <sup>3</sup> /hr)	
Pressure-	rod side	1015 psi (70 bar)	1233 psi (85 bar)	
	piston side	1624 psi• (112 bar)•	1885 psi• (130 bar)•	
Concrete cylinder diameter	9"	(230mm)	9"	(230mm)
Stroke length	83"	(2100mm)	83"	(2100mm)
Max strokes per minute-	rod side	21	31	
	piston side	13	21	
Volume control	0-Full		0-Full	
Vibrator	Standard		Standard	
Hard-chromed concrete cylinders	Standard		Standard	
Hydraulic system	Free Flow		Free Flow	
Hyd. system pressure	5075 psi (350 bar)		5075 psi (350 bar)	
Differential cylinder dia.	5.1" (130mm)		5.5" (140mm)	
Rod diameter	3.1" (80mm)		3.1" (80mm)	
Maximum size aggregate	2.5" (63mm)		2.5" (63mm)	
Water Tank	185 gal (700L)		185 gal (700L)	

Maximum theoretical values listed.

\* Applies to units mounted on PMA stock truck-Mack MR688S

• Standard delivery line system rated at max line pressure of 1233 psi (85 bar)



End hose not to be operated in caution area.



**Putzmeister America**  
1733 90th Street  
Sturtevant  
Wisconsin 53177 USA

Telephone (262) 886-3200  
(800) 884-7210  
Facsimile (262) 884-6338  
www.putzmeister.com

Right to make technical amendments reserved.